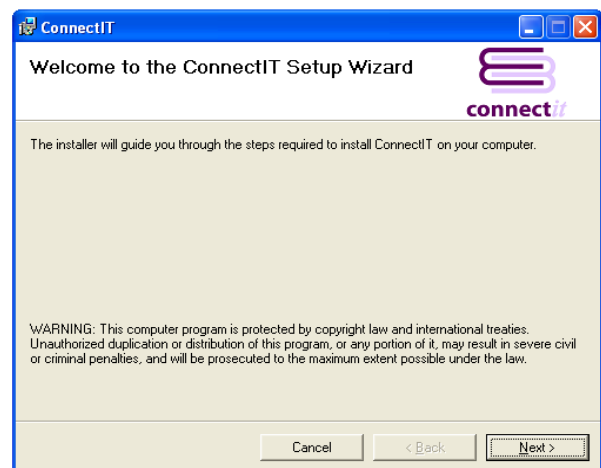


Step-by-Step Guide to Installation

1. Download the installation files from <http://www.connectit-software.co.uk/registration/login.aspx?p=CITSAGE200>
2. Using the Windows Extraction Wizard, WinZip, or equivalent, extract the files to a convenient place on your PC or server.
3. From within the unpacked files, run the **setup.exe** file.

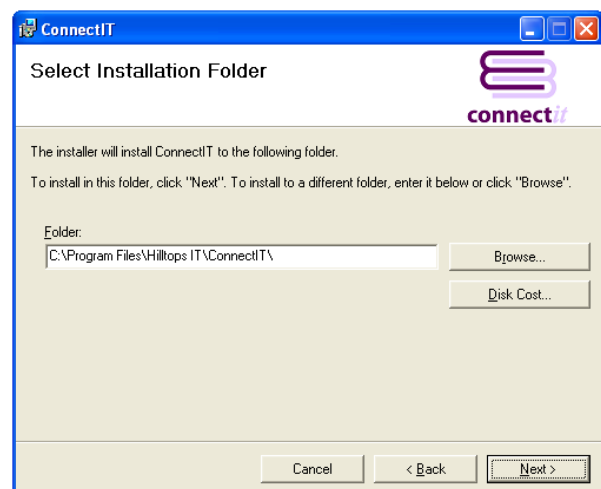
At this point during the installation, the setup wizard will look for the prerequisite software on your machine. If any errors or messages appear that you are unsure about, please refer to your IT Support team or our online Knowledge Base support area at <http://www.connectit-software.co.uk/support/>

4. When the **Welcome to the ConnectIt Setup Wizard** screen appears, review the comments and click **Next**.

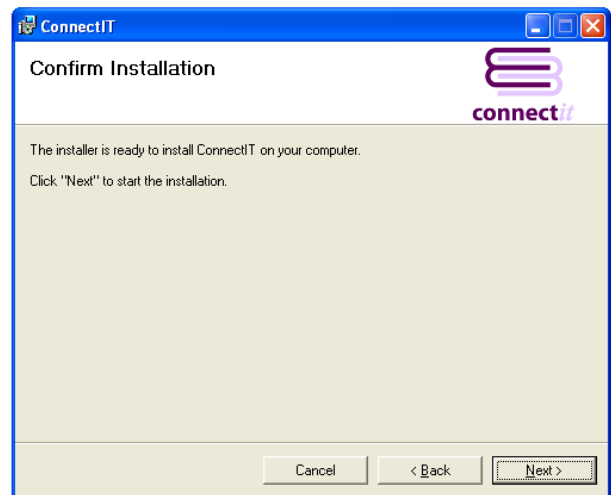


5. When the **Select Installation Folder** screen appears, review the settings and click **Next**.

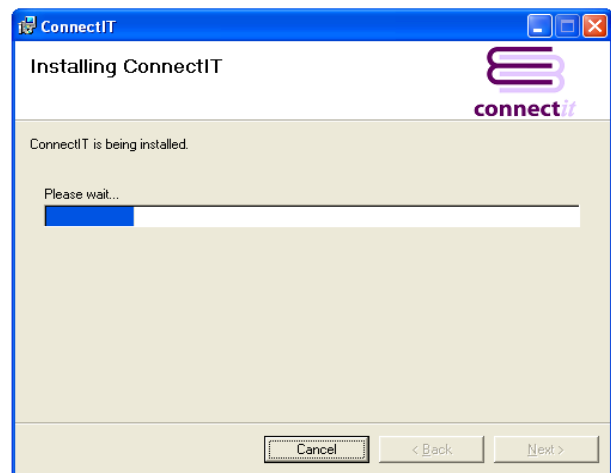
Note: Connectit should be installed to a local drive and not a network drive.



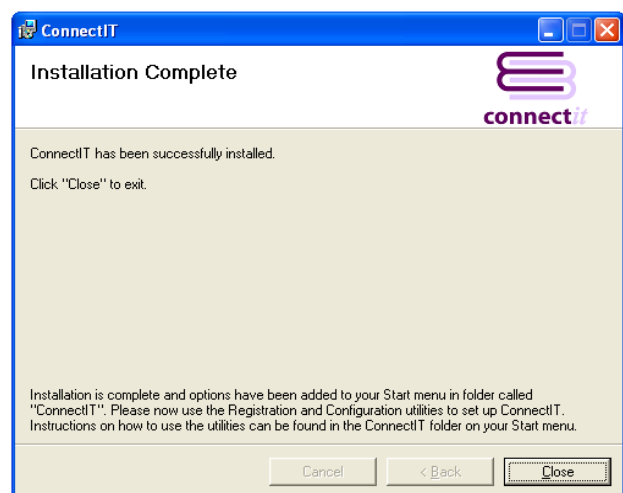
6. When the **Confirm Installation** screen appears, click **Next** to start the installation.



7. Please wait while **ConnectIt** is being installed. A progress bar will indicate the progress of the installation.



8. When the **Installation Complete** screen appears, click **Close** to finish the installation.



Installation is complete and options have been added to your Start menu | All Programs in a folder called "ConnectIt-Sage200".

Please now start QuoteWerks and use the Registration utility to register the installation; followed by the Registration Manager to set up which user(s) will be able to use ConnectIt-Sage200; and finally the Configuration utility to set up ConnectIt-Sage200 for your company's requirements. Shortcuts to and instructions about how to use the utilities can also be found in the ConnectIt-Sage folder on your Start menu | All Programs.