

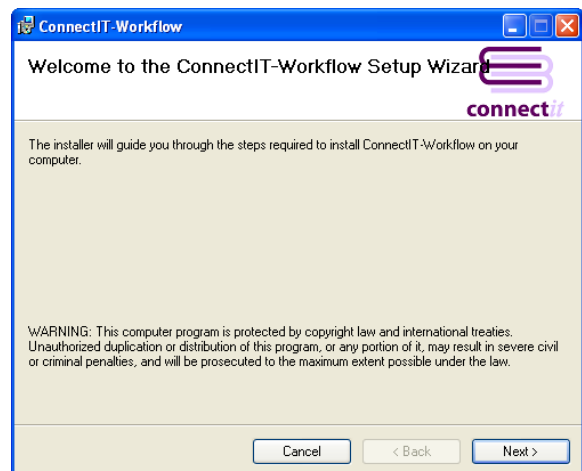
Step-by-Step Guide to Installation

Installing ConnectIt-Workflow

1. Download the installation files from <http://www.connectit-software.co.uk/registration/index.aspx?p=CITWF>
2. Using the Windows Extraction Wizard, WinZip, or equivalent, extract the files to a convenient place on your PC or server.
3. From within the unpacked files, run the **setup.exe** file.

At this point during the installation, the setup wizard will look for the prerequisite software on your machine. If any errors or messages appear that you are unsure about, please refer to your IT Support team or our online Knowledge Base support area at <http://www.connectit-software.co.uk/support/>

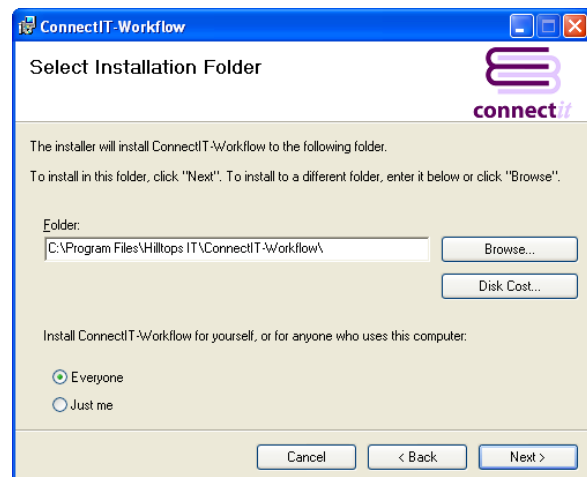
4. When the **Welcome to the ConnectIt Setup Wizard** screen appears, review the comments and click **Next**.



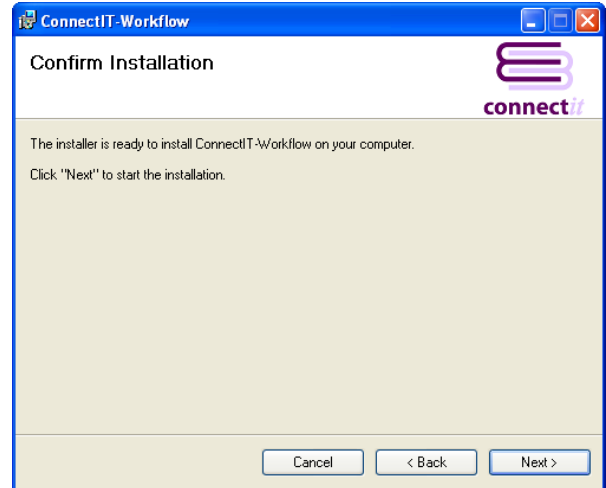
5. When the **Select Installation Folder** screen appears, review the settings and click **Next**.

Note:

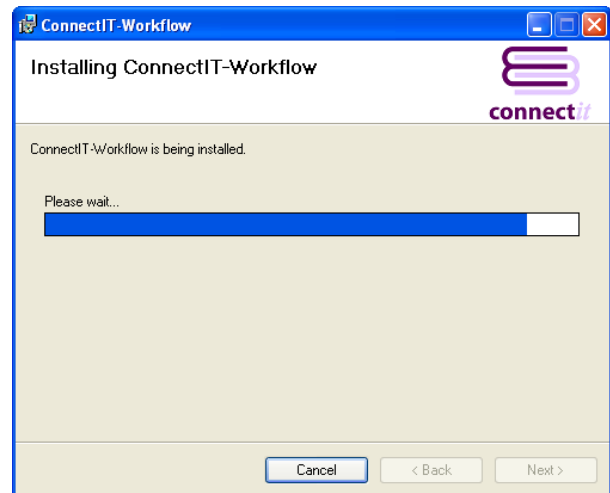
- 1) ConnectIt-Workflow should be installed to a local drive and not a network drive.
- 2) ConnectIt-Workflow should be installed to the same directory on all users' PCs.



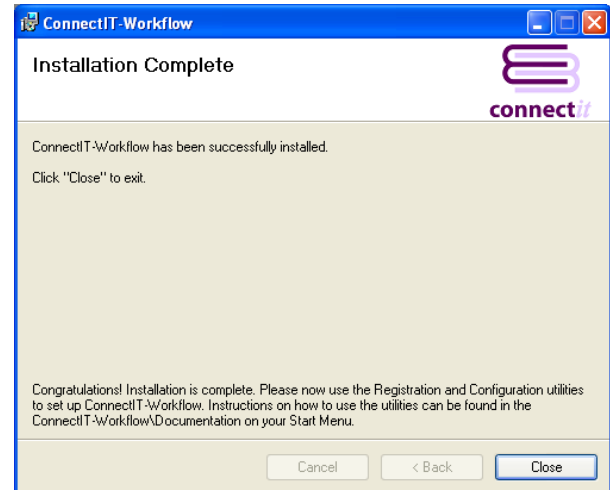
6. When the **Confirm Installation** screen appears, click **Next** to start the installation.



7. Please wait while **ConnectIt** is being installed. A progress bar will indicate the progress of the installation.



8. When the **Installation Complete** screen appears, click **Close** to finish the installation.



Installation is complete and options have been added to your Start menu | All Programs in a folder called "ConnectIt-Workflow".

Please now start QuoteWerks and use the Registration utility to register the installation; followed by the Configuration utility to set up ConnectIt-Workflow for your company's requirements. Shortcuts to and instructions about how to use the utilities can also be found in the ConnectIt-Workflow folder on your Start menu | All Programs.



Running ConnectIt-Workflow alongside QuoteWerks

QuoteWerks can be configured to automatically start or run applications that use the **QuoteWerks API** when **QuoteWerks** is started. In the **site.ini** file, which is in the **QuoteWerks** installation directory, there is support for a section called [Addons], and the key Autorun1=[AddonAppName.exe] will run the specified application.

The keys AutoRun1 through AutoRun10 are supported. If the section does not exist, it may be manually added as follows:

1. Close QuoteWerks.
2. Using Notepad or a similar text file editor, open the site.ini file in the QuoteWerks installation directory (by default C:\Program Files\QuoteWerks\ or this may be on a server in a multi-user environment, for example Q:\QuoteWerks\).
3. Add the following lines to the end of the document:

```
[Addons]
AutoRun1=%ProgramFiles%\Hilltops IT\ConnectIt-Workflow\ConnectIt.exe
```

Note: If AutoRun1 is already in use for another application, then simply create the next available key.

4. Save and close the document.
5. Restart QuoteWerks.
6. ConnectIt-Workflow should now start when you start QuoteWerks.

To ensure that all users run and make use of **ConnectIt-Workflow**'s features, we strongly recommend that this AutoRun key is added to the **QuoteWerks site.ini** file.

